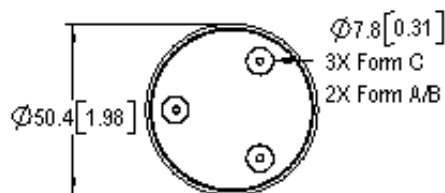
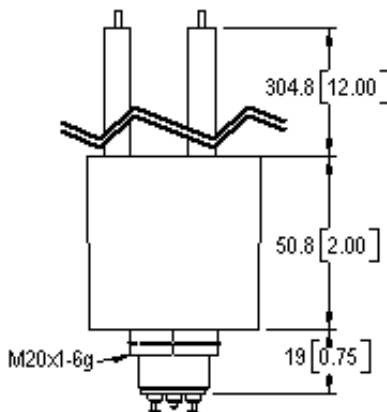


Make Only Load Switching
RoHS Compliant



FEATURES	
G71A & G71B	
•	Sealed 70 kV isolation in about 6.3 cubic inch (100 cubic cm) package - your will be system the smallest in the industry!
•	SF-6 gas filled for capacitive discharge with no x-ray emissions
•	Pre-tinned, optional length, high voltage leads making installation easy
•	Great for charging & discharging capacitors with no bounce under load
•	GIGAVAC exclusive replaceable coils
G71C	
•	Same great features as the G71A and G71B
•	Double Throw (SPDT) for polarity reversal and multiple power source switching

PRODUCT SPECIFICATIONS					
Contact & Relay Ratings		Units	G71A	G71B	G71C
Contact Form			A	B	C
Contact Arrangement			SPST-NO	SPST-NC	SPDT
Voltage, Test Max., Contacts & to Base (15 µA Leakage Max, dc)		kV Peak	75	75	75
Voltage, Operating Max., Contacts & to Base (15 µA Leakage Max.)					
dc	kV Peak	70	70	70	
60 Hz RMS	kV Peak	30	30	30	
2.5 MHz	kV Peak	-	-	-	
16 MHz	kV Peak	-	-	-	
32 MHz	kV Peak	-	-	-	
Current, Continuous Carry Max					
dc or 60 Hz	Amps	10	10	10	
2.5 MHz	Amps	-	-	-	
16 MHz	Amps	-	-	-	
32 MHz	Amps	-	-	-	
Coil Hi-Pot (V RMS, 60 Hz)		V	500	500	500
Capacitance					
Across Open Contacts		pF	-	-	-
Contacts to Ground		pF	-	-	-
Resistance, Contact Max @ 1A, 28 Vdc		ohms	2.0*	2.0*	2.0*
Operate Time		ms	20	20	20
Release Time		ms	15	15	15
Life, Mechanical		cycles	.5 million	.5 million	.5 million
Weight, Nominal		g (oz)	336 (12)	336 (12)	336 (12)
Vibration, Operating, Sine (55-500 Hz Peak)		G's	10	10	10
Shock, Operating, 1/2 Sine 11ms (Peak)		G's	20	20	20
Temperature Ambient Operating		°C	-50 to +85	-50 to +85	-50 to +85

COIL RATINGS			
Nominal, Volts dc	12	26.5	115
Pick-up, Volts dc, Max.	9	22	90
Drop-Out, Volts dc	0.5-5	1-10	5-50
Coil Resistance (Ohms ±10%)	18	75	1300

Ratings listed are for 25°C, sea level conditions

For more information, refer to

[Relay User Instructions](#)

G71 **A 7 4 1**

Contact Form
A = SPST-NO
B = SPST-NC
C = SPDT

Coil Voltage
7 = 12 Vdc, Turret Terminal
8 = 26.5 Vdc, Turret Terminal
9 = 115 Vdc, Turret Terminal

High Voltage Connections
4 = Flying Leads, 12"
7 = Flying Leads, 72"
8 = Flying Leads, 36"

Mounting
1 = Threaded

*Contact resistance for gas-filled measured at 28 Vdc, 1 Amp

12/02/14