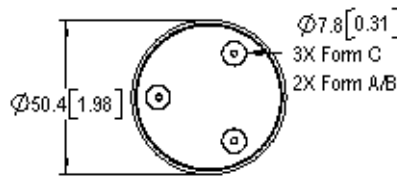
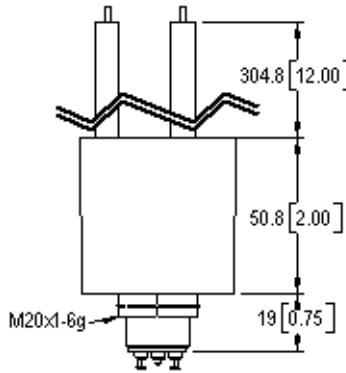


G62A - G62B - G62C

25 kV

RoHS Compliant



FEATURES	
G62A & G62B & G62C	
◆	Compact design saves precious space while isolating 25kV
◆	Flying leads provide versatile high voltage connections

PRODUCT SPECIFICATIONS				
Contact & Relay Ratings	Units	G62A	G62B	G62C
Contact Form		A	B	C
Contact Arrangement		SPST-NO	SPST-NC	SPDT
Contact Material (moveable/stationary)		molybdenum /tungsten	molybdenum /tungsten	molybdenum /tungsten
Dielectric		gas mixture	gas mixture	gas mixture
Voltage, Test Max., Contacts & to Base (15 µA Leakage Max., dc or 60Hz)	kV Peak	30	30	30
Voltage, Operating Max., Contacts & to Base (15 µA Leakage Max.)				
dc or 60 Hz	kV Peak	25	25	25
Current, Load Switching (make & break capable)	cycles	contact factory	contact factory	contact factory
Current, Continuous Carry Max				
dc or 60 Hz	Amps	18	18	18
Coil Hi-Pot (V RMS, 60 Hz)	V	500	500	500
Capacitance				
Across Open Contacts	pF	-	-	-
Contacts to Ground	pF	-	-	-
Resistance, Contact Max @ 1A, 28Vdc	ohms	0.50	0.50	0.50
Operate Time	ms	15	15	15
Release Time	ms	15	15	15
Life, Mechanical	cycles	1 million	1 million	1 million
Weight, Nominal	g (oz)	336 (12)	336 (12)	336 (12)
Vibration, Operating, Sine (55-500 Hz Peak)	G's	10	10	10
Shock, Operating, 1/2 Sine 11ms (Peak)	G's	20	20	20
Temperature Ambient Operating	°C	-55 to +85	-55 to +85	-55 to +85

COIL RATINGS			
Nominal, Volts dc	12	26.5	115
Pick-up, Volts dc, Max.	9	18	90
Drop-Out, Volts dc	.5 - 5	1 - 10	5 - 55
Coil Resistance (Ohms ±10%)	30	125	2000

Ratings listed are for 25°C, sea level conditions

For more information, refer to [Relay User Instructions](#)

G62 **A 7 4 1**

Contact Form A = SPST-NO B = SPST-NC C = SPDT	
Coil Voltage 7 = 12 Vdc, Turret Terminal 8 = 26.5 Vdc, Turret Terminal 9 = 115 Vdc, Turret Terminal	
High Voltage Connections 4 = Flying Leads, 12" 7 = Flying Leads, 72" 8 = Flying Leads, 36"	
Mounting 1 = Threaded	

09/06/11

